



LEAD LIMITLESS

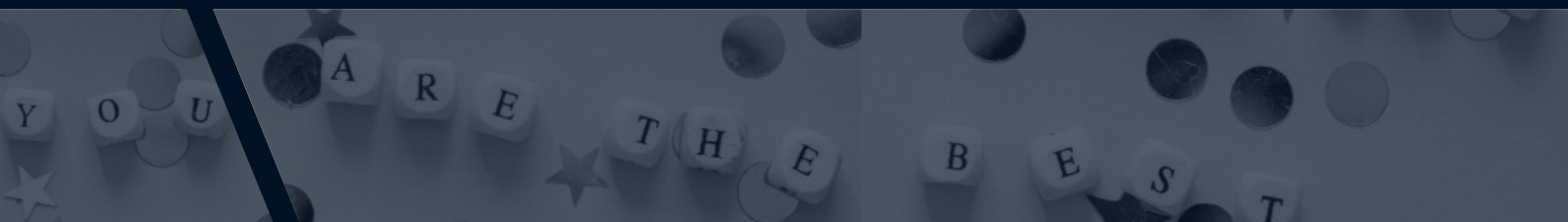
Take your organization and yourself
to the next level

C-SUITE & SENIOR EXECUTIVES
(ONE-ON-ONE COACHING)



TABLE OF CONTENTS

About the Program.....	03
Ideal For.....	03
Coaching Engagement Duration.....	04
Features.....	05
Leadership Essentials.....	06
Benefits.....	07
Process.....	08
What you will learn.....	09
Ways to Partner.....	10



ABOUT THE PROGRAM

What a leader thinks and behaves directly impacts the entire organization. As a senior executive, it is essential to develop a keen insight into what's working, what's not, and what you need to do to ensure a successful future for both your organization and yourself.

LEAD LIMITLESS is an intimate, highly personalized leadership coaching program that will give you a complete view of who you are as a leader and person. Through 360-degree feedback, personal interviews, and one-on-one coaching, you will leave the program with a clear path forward, as well as the tools to see it through

IDEAL FOR

C-Suite and Senior Executives.

COACHING ENGAGEMENT DURATION



Option 1

2 MONTHS | 4 SESSIONS

To become a better leader, First, you need to understand the present state of your leadership journey. Before you can set out on an inspiring journey towards achieving specific goals and creating a development plan, you must identify your patterns, strengths, development areas etc. This engagement is to discover yourself.

You're about to embark on an intense 2-month coaching sprint; we'll assign you a coach. Together with your coach, you will have a complete analysis of who you are, where you stand, and where you want to go. This is when the real transformation begins.



Option 2

4 MONTHS | 8 SESSIONS

Four months of coaching is the perfect time to get an accurate picture of your progress and see how things are shaping up. A progress review will allow you to understand better where there may be room for improvement and help set goals going forward.

Your 4-month coaching journey will provide you with your first round of insights into the extent of your improvement. You've achieved great first results by daily creating new behaviours, refining existing skills, and overcoming leadership and personal challenges. You've grown, and your coworkers have recognized it.



Option 3

6 MONTHS | 12 SESSIONS

After changing behaviour, the next challenge is changing perceptions associated with that behaviour. The way to change and become a better leader is to change these behaviors and related perceptions. And this process takes time.

Six months from now, you've created a foundation for long-lasting success by making sustainable changes in your mindset and behaviour. As a result, you've transformed, personally and professionally, into an exceptionally resilient, flexible, inspirational, and authentic leader.

FEATURES

- 360-degree feedback and personal interviews for assessment.
- Safe and confidential one-on-one coaching.
- Learning through experiential activities and self-reflection.
- Guaranteed and measurable results.

Mindpurpose Leadership coaching helps leaders of all levels identify and improve on the four essential areas: Leading Self, Engaging Others, Assuring Success & Getting Future Ready. This powerful one-on-one program takes place in a safe space where participants can assess themselves against these critical competencies for leadership development while improving their skillset through focused attention from an experienced coach.



LEADING SELF

- Understand your behaviour's impact on organizational outcomes



ENGAGING OTHERS

- Effectively communicate goals and inspire trust.



ASSURING SUCCESS

- Empower and enable people to achieve organizational objectives.



GETTING FUTURE-READY

- Know future trends prepare for change, and help others to do so.

BENEFITS

FOR INDIVIDUALS

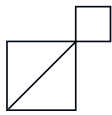
- Improved decision-making skills and agility.
- Enhanced ability to work effectively across boundaries.
- Increased self-awareness and resilience.
- Sharpened communication skills.

FOR ORGANISATION

- Improved relationships and collaboration between stakeholders and across functions.
- Improved ownership and accountability are exhibited by leaders, leading to consistent results.
- Leaders have developed innovative and systemic thinking, sparking creative solutions for the organization.
- Authentic leaders lead the organization to new heights.

OUR FRAMEWORK

All our programs are designed using the Mindpurpose 4-phase framework to facilitate participant growth.



EXPLORE

The first step in the program is that the participants identify their core strengths and articulate the critical development areas through a combination of online surveys and personal interviews.



INNOVATE

Defining the engagement's objectives and milestones with a clear pathway. And creating innovative solutions and strategies to get there - what's needed now and later so that things go smoothly.



ACTIVATE

Participants take laser-focused actions with clarity and focus. They periodically review milestones and assess any new challenges or changes needed on this plan.



CELEBRATE

Participants celebrate their success and reflect on the strengths that helped them succeed. Now, they can use their strengths in other areas.

WHAT WILL YOU LEARN

You'll leave this program with a clear path towards becoming authentic leaders. In addition, you will get feedback, reflect on your experiences, and learn techniques to continue developing into a successful leader at work and in life.

KEY LEARNINGS

- Strategies for increasing influence and your ability to drive organizational results.
- Practice methods to boost your resilience in the face of uncertainty and complexity.
- Ways to incorporate a healthy lifestyle into your leadership toolbox.
- Focus and clarity on improving the effectiveness of leadership behavior.

WAYS TO PARTNER

Experience "Lead Limitless" in three convenient ways. We can come to you or meet on an online platform or customized/hybrid model for you.



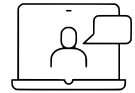
FACE TO FACE

We can come to your location.



HYBRID/CUSTOMISED

A combination of online and face-to-face to get the best results.



ONLINE

One-on-one/group video calls

LETS GET STARTED

FIND US HERE

Mind Purpose,
GPL Eden Heights, G-802, Sector 70,
Gurugram, Haryana 122101

support@mindpurpose.in
7010571232

www.mindpurpose.in